



Young Regulator Co.

7100 Krick Rd • Walton Hills, OH 44146

P: 440-232-9700 • F: 440-232-8266

www.youngregulator.com

Submit 301 – 1-10

Model 301 & 315
*Concealed Ceiling Regulator
 and Cover Plate*

**Concealed
 Ceiling
 Regulator**



**Model
 301**

The Young 301 concealed locking regulator is designed to control dampers from the ceiling line. The 301 may be used with either our 820A-C rectangular or our 5020-B round bottom duct mounted damper. It may also be used in combination with our 927 and 1200 right angle controls on any round or rectangular side control damper, including Young 5020 and 820 Series. The 301 regulator is imbedded in the ceiling so that the unit is flush with the finished surface. It is 2 5/8" in diameter and 15/16" deep, with a 3" cover plate that covers the joint between box and plaster. The cover plate, which should be removed before plastering, is held in place by two 6-32 x 5/8" stainless steel machine screws that are easily removed for damper adjustment. The 301 is operated by our 04 wrench, available separately, which fits the end of the 3/8" damper rod. 301 must be used with 3/8" rod. A variety of adapters and couplings for use with rods of other dimensions are available.

Options Include:

Stainless Cover, 3"	301-SS
Primer Cover, 3"	301-P
Chrome Cover, 3"	301-C
Oversized Cover, Zinc, 3.75"	301-09
Oversized Cover, Chrome, 3.75"	301-09-C
Oversized Cover, Primer, 3.75"	301-09-P
Oversized Cover, Stainless, 3.75"	301-09-SS
301 Regulator Wrench (required)	04
Tamper Proof Screws	980
Tamper Proof Tool	982

**Concealed
 Ceiling
 Regulator**



**Model
 315**

The 315 3/8" concealed adjustable cover locking regulator is designed for use in either plaster or acoustical ceilings. It is similar to our 301 regulator, except that its 2 1/4" diameter cover plate is adjustable from 1/2" to 1 1/8" by using our 024 spanner wrench, available separately. The adjustable cover should be removed before plastering or before installing an acoustical ceiling. The 5/16" flange on the cover plate conceals the joint between box and ceiling material. The 315 regulator is adjusted by our 021 socket wrench, available separately. Like the 301, the 315 cover plate is available in either zinc plated or polished chrome finishes. Please specify on your order.

The 315A concealed adjustable cover regulator is no longer available

Note: The 315 must be used with 3/8" rod. A variety of adapters for use with rods of other dimensions are available.

Primer Cover	315-P
Chrome Plated Cover	315-C
315 Regulator Socket Wrench (required)	021
315 Cover Spanner Wrench (required)	024



Young Regulator Co.

7100 Krick Rd • Walton Hills, OH 44146

P: 440-232-9700 • F: 440-232-8266

www.youngregulator.com

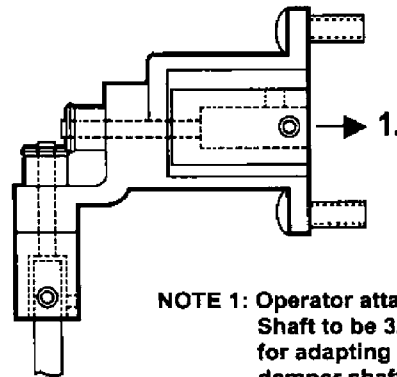
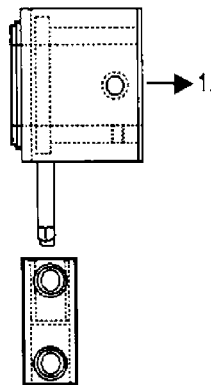
Submit 301 – 1-10

Model 301 & 315 Concealed Ceiling Regulator and Cover Plate

A.

#1200 Worm Gear

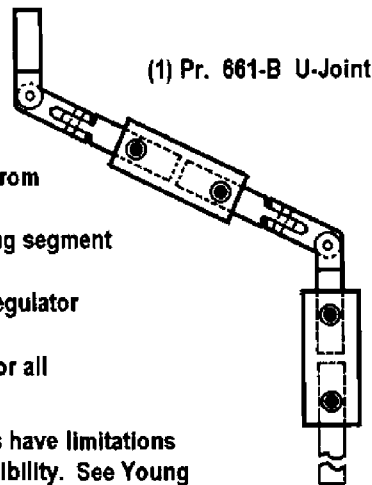
#927C Miter Gear



NOTE 1: Operator attaches to damper. Shaft to be 3/8" sq. or 1/2" rd. for adapting to other size damper shaft consult factory.

#619
Coupling
5/16" sq. to 3/8" rd.

B.



#617
Coupling
3/8" sq. to 3/8" sq.

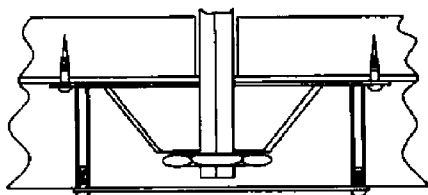


NOTE 2:

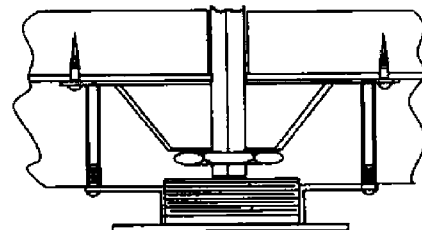
- Choose operator from section (A).
- Choose connecting segment from (B).
- Choose locking regulator from (C).
- Use 3/8" sq. rod for all extensions.

NOTE 3: These assemblies have limitations in length and flexibility. See Young bowden cable system for alternative options.

C.



#301 Concealed Regulator



#315 Concealed Regulator - Adjustable