



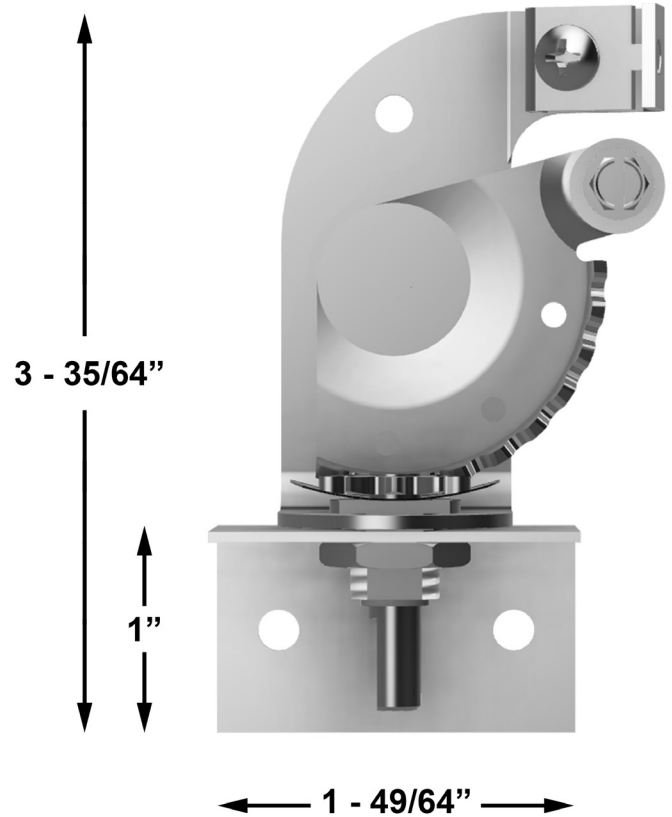
**Model 270-275**  
**Bowden Remote Cable Control**

**Application and Design**

Balancing dampers located in inaccessible spaces are now easily controlled with the Young Regulator Bowden Remote Cable Assemblies. Access is concealed in the ceiling, inside plenums, or moved to a convenient area such as a nearby mechanical room or above a lay in ceiling. Access doors can be eliminated for architectural aesthetics.

A flexible casing and wire, (PT# BCW, ordered separately) up to 50' long runs from a steel rack and pinion locking controller to a damper where the rotary motion of the rack and pinion controller is converted to a push-pull motion with a lever arm.

The 270-275 can mount inside the plenum of a slot diffuser, with access to the controller through the opening in the bottom of the slot



STANDARD CONSTRUCTION	
Rack and Pinion	14 ga. Galvanized Steel
Angle Bracket	18 ga. Galvanized Steel
ACCESSORIES	
Controlled with model 030-12 wrench	
BCW - Bowden Casing and Wire (ordered separately by the foot or in bulk)	
Right angle bracket to secure to plenum wall	

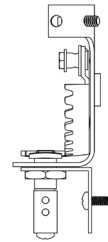
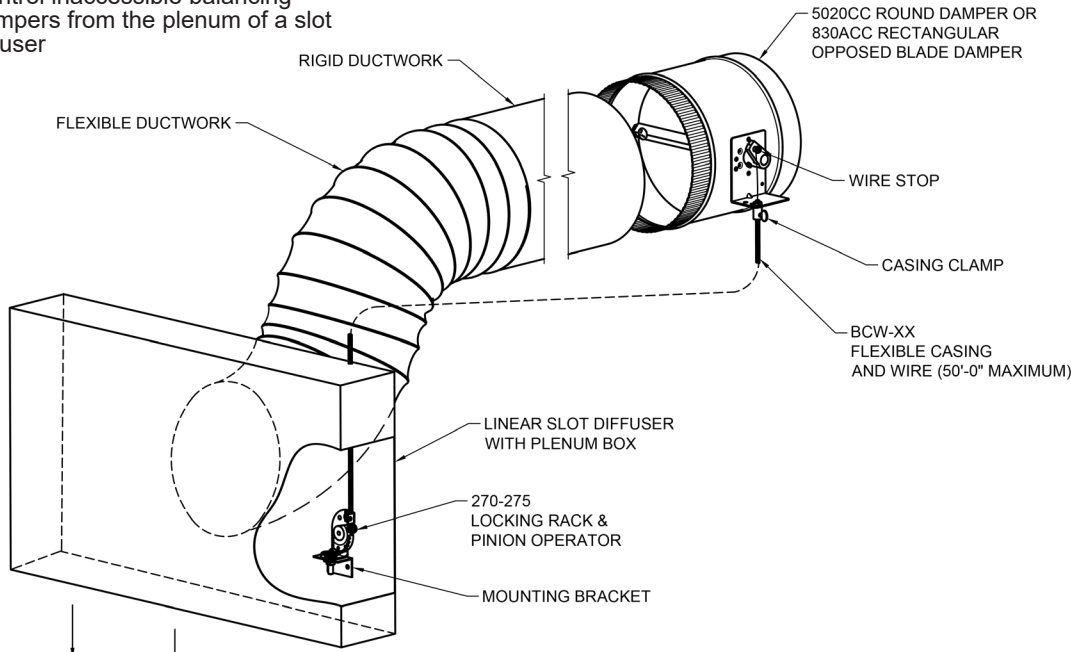
OPTIONS
270-275B with hardware for dampers by others with 1/2" round or 3/8" square damper shaft
270-275B-Q with hardware for dampers by others with 5/16" round or 1/4" square damper shaft
270-275-ML for use with "ice-tong" diffusers
270-275-PH with phillips head adjustment

Quantity	Option	Notes
<b>PROJECT</b>	<b>LOCATION</b>	
<b>CONTRACTOR</b>	<b>DESIGN SPECIFIER</b>	

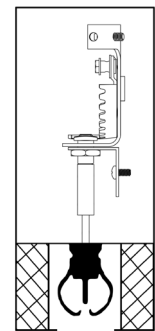


**Model 270-275**  
**Bowden Remote Cable Control**

**270-275 with 5020CC Damper**  
Control inaccessible balancing dampers from the plenum of a slot diffuser



**270-275-PH:**  
Optional extended control shaft adjustment for Phillips screwdrivers

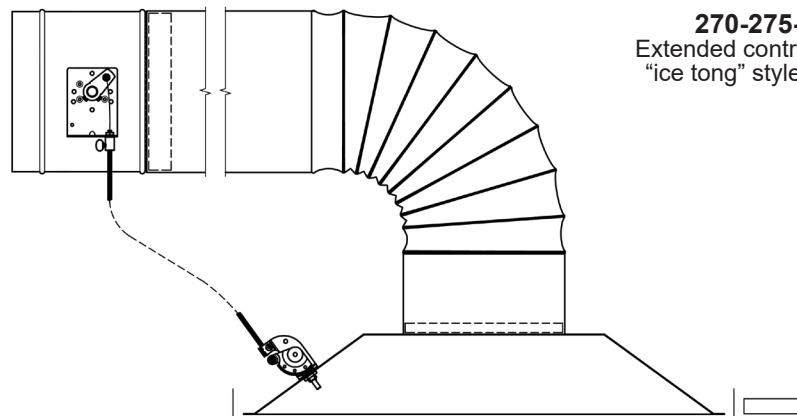


**270-275-ML:**  
Extended control shaft for "ice tong" style diffusers

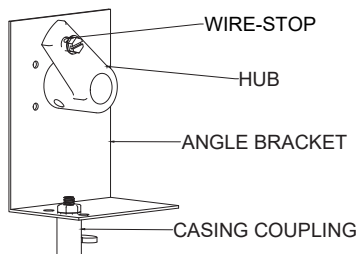
030-12 SOCKET WRENCH



**270-275 with 5020CC Damper**  
Control inaccessible balancing dampers from the top of a square lay-in diffuser



**B-Kit**  
Hardware to control dampers-by-others.



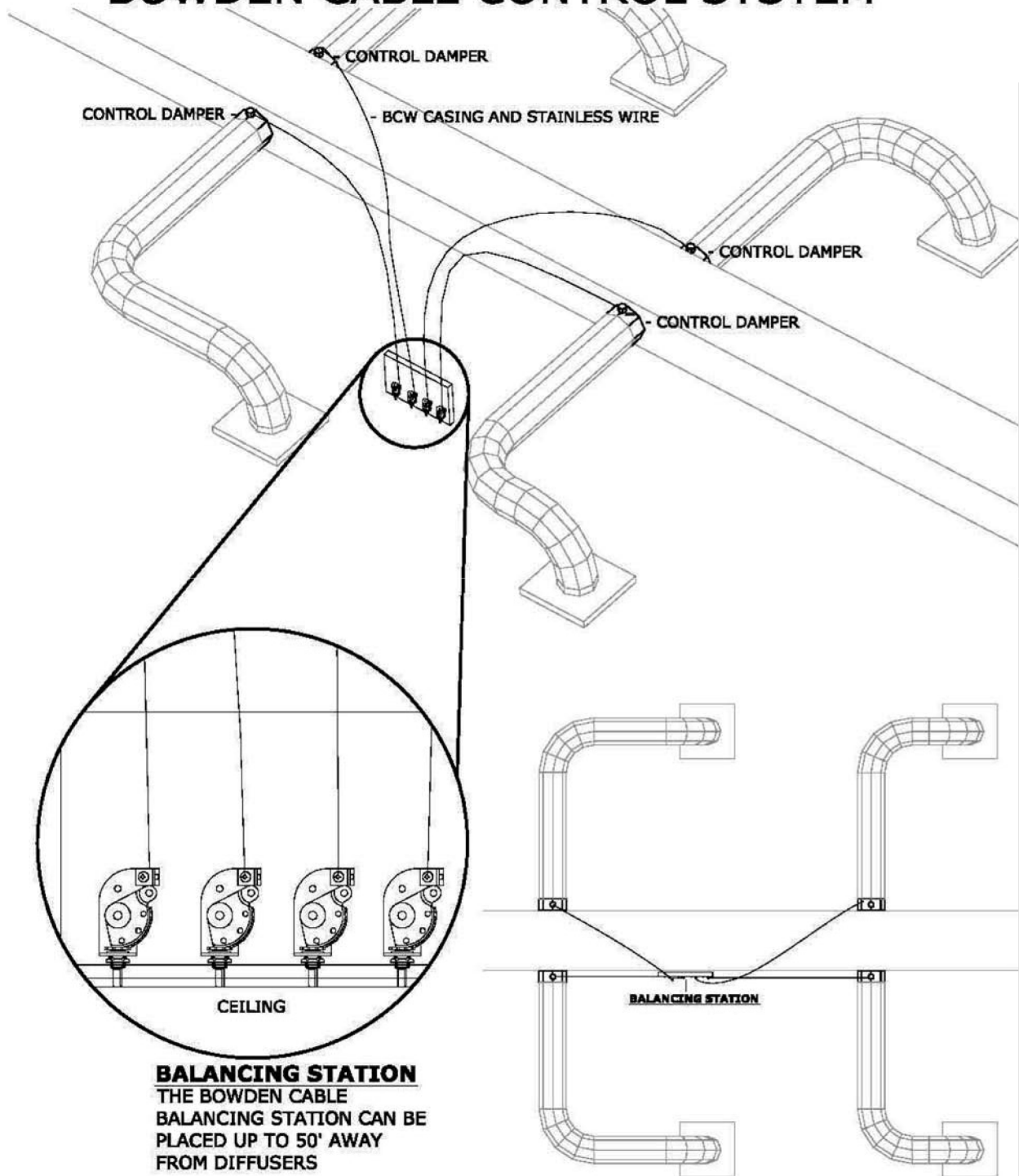
**Model 270-275 Inside of the Plenum**

Damper controller and cable shall be fastened to the inside of the plenum within the airstream. Allow access to damper operator. Cable to consist of Bowden cable .054" stainless steel control wire with a tensile strength of 260,000 lbs. that is encapsulated in 1/16" flexible galvanized spiral wire sheath. Control kit shall be designed for use with internally or externally controlled round or rectangular dampers and shall consist of 14 gauge steel rack and pinion gear drive capable of delivering 35 in lbs. of push/pull torque that converts rotary motion to push-pull motion. Control shaft shall be D-style flattened 1/4" diameter with 265-degree rotation providing 1-1/2" linear travel capability. Control kit mounting bracket can be field mounted on ceiling framework, behind grilles, on or inside plenum slot diffusers and other various types of diffusers. Control kit shall be manually operated using Young Regulator Model 030 Wrench. Control kit shall be Young Regulator Model 270-275 or prior approved equal. Specify 270-275PH for phillips head adjustment. Specify 270-275ML for "ice tong" style diffuser.



**Model 270-275**  
*Bowden Remote Cable Control*

## BOWDEN CABLE CONTROL SYSTEM



**BALANCING STATION**  
THE BOWDEN CABLE  
BALANCING STATION CAN BE  
PLACED UP TO 50' AWAY  
FROM DIFFUSERS