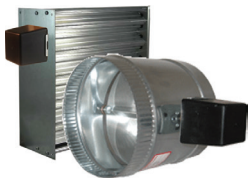




Air Control Dampers



4011 Round

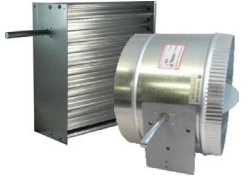
3151 Rectangular

- Commercial quality damper
- Economical spring return motor
- Zone controls
- Intake/Exhaust Controls



4075-LMB / 3085-LMB

- Commercial quality control damper
- Floating point or On/Off
- Optional proportional modulation
- Belimo brushless 24V motor
- 5 year warranty



4040P Round

3085 NM Rectangular

- Commercial quality damper
- Ready for your controls



9100-LMB Modulating Diffuser

12"x12" or 24"x 24"

- Floating point or proportional modulation
- Belimo brushless 24V motor
- 5 year warranty



RDTF Round

SDTF Rectangular

- Commercial quality control dampers
- 2 Position, spring return
- Belimo brushless 24V or 120V
- 5 year Warranty



T-720A Proportional & Integral thermostat.

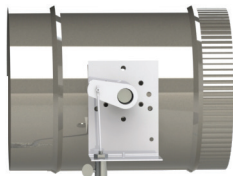
- Digital
- Auto change-over sensor
- Other thermostats are available
- Contact the factory for guidance

Customize!

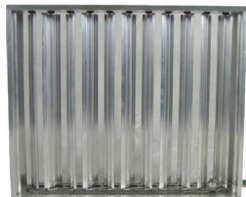
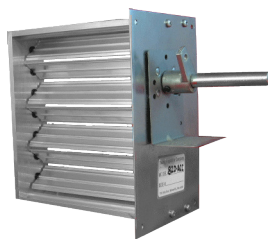
Options include: special actuators, low-leak seals, stainless or aluminum construction, reversed operation, odd sizes, medium pressure and more. Call for more info. (440)232-9700

Bowden Cable Controls

5020CC Round



820ACC Rectangular



830 ACC

The Young Regulator Bowden Cable Controls are the basis of design for operating inaccessible balancing dampers.

A heavy duty rack and pinion controller provides positive locking control of our commercial quality dampers through a heavy duty casing and wire.



270-301
Cut-away

"Volume dampers in sound-critical spaces should always be a minimum of 5 to 10 duct diameters from the air device. ... a damper can generate sound that is transmitted down the duct to the room air device" (ASHRAE 2015 Applications Handbook)

Typical Bowden Applications:

- Dampers above a finished ceiling
- Underground ductwork
- Atriums, prisons, dormitories
- Aesthetic requirements preclude access doors

Controller Solutions:

Diffuser mounted	270-275
Concealed ceiling cup	270-301
Concealed ceiling	270-301-EZ
Threaded 1" cap	270-896
Wall mounted cup	270-302
Manual wall control	270-700



270-896

Bowden casing and wire is available in bulk (50 foot rolls) to be cut to length in the field or factory cut to specific lengths.

We offer Hardware kits ("B-Kits") to incorporate Bowden Controls to dampers by others.



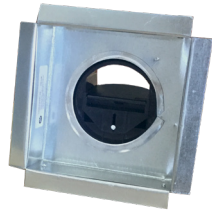
Constant Volume Product Family

CVR

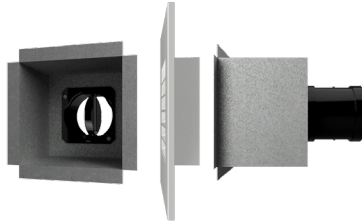


CVR-xx

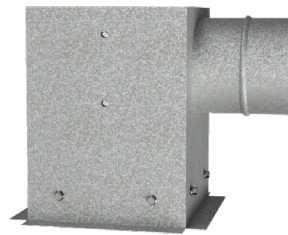
Constant Volume Regulators



Register Box (F2)



Wall Box (F5)



Ceiling Box (F8)

CVP



CVP-xx

CVR		Description	CVP	
Sizes:	3", 4", 5", 6", 8", 10"	<p>The CVR and CVP Constant Volume Regulators accurately control the maximum volume of air supplied into and/or exhausted from a space to save energy, improve comfort, and help achieve the IAQ requirements of today's ventilation guidelines.</p> <p>A spring-loaded damper reacts to the air velocity moving through. As velocity increases, the blade moves toward closed to block the free area and deliver only the desired volume of air.</p> <p>Both of these units are available by themselves or factory installed in heavy 24 gauge, sheet metal fittings. Standard and custom sizes available.</p>	Sizes	4", 5", 6", 8" soon
Pressure	0.2-1.0 InWC		Pressure	0.2-2.0 InWC
Flow Range	10-410 CFM		Flow Range	25-275 CFM
Ratings	UL 2043 UL 94 V0 ABS Material European M1		Ratings	UL 2043 ANSI/AMCA 500-D-12
Fire Dampers	Available w/ F5 and F8 configurations		Material	Anti-Microbial ABS
Calibration	Cubic Meters/Hr		Calibration	Cubic Feet/Min (CFM)
Origin	Made in France	Fire Dampers	Available in F5 and F8 configurations	
Value Product Line		UL Rated Assembly	Available in limited standard wall sizes	
		Origin	Made in USA	

CVD Round

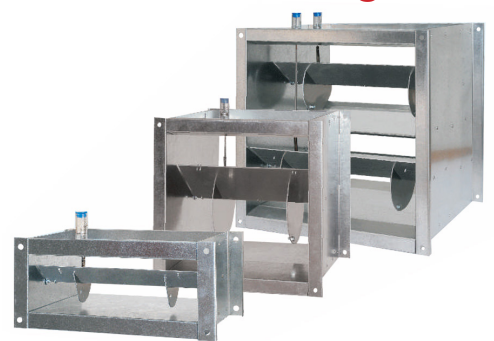


Constant Volume Dampers

Constant Volume Dampers provide a tool for higher volume and pressure applications. These dampers will handle up to 4.0 InWC and 5900 CFM.

They are adjustable and calibrated in both CFM and metric units. (M³/hr)

CVDR Rectangular



What is constant volume all about? Constant Volume Products take the threat out of system design. Size the blower big enough to do the job and rely on the regulator to maintain a maximum flow into or out of the space. Build a system that is self-balancing by design.

Constant Volume Data Sheet

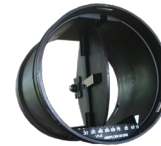
CVR



CVR Available Flow Ranges (cfm)					Static Pressure 0.2 - 1.0 InWC	
Diameter (inches)						
	3	4	5	6	8	10
Part #	CVR-03	CVR-04L	CVR-05L	CVR-06L		
CFM Range	10-30	10-30	10-30	10-30		
		CVR-04H	CVR-05M	CVR-06ML		
		30-60	30-60	30-60		
			CVR-05H	CVR-06MH	CVR-08L	
			60-105	60-105	60-105	
				CVR-06H	CVR-08M	CVR-10L
				105-175	105-175	105-175
					CVR-08H	CVR-10M
					175-295	175-295
						CVR-10H
						295-410

The CVR utilizes multiple orifice sizes for each diameter to provide accurate adjustability over a wide range of pressures.

Choose your diameter then the model that provides the volume you need.



CVP Plus

Larger pressure range
Made in the USA
Tool-Free adjustment
Anti-Microbial plastic

CVP Flow Rates		
Static Pressure 0.2-2.0 InWC		
Diameter (in)	Volume (cfm)	Length (in)
4"	25-130	3.5
5"	25-130	3.7
6"	50-275	5.25
8"	Coming Spring 2019	



CVD Constant Volume Dampers - Round Inline damper that limits total airflow. Up to 4.0 InWC

Round Constant Volume Dampers				Static Pressure 0.2 to 4.0 InWC		
Diameter		Volume (cfm)		Product Specs		
Inch	mm	Min/Max	Min/Max	Total Length	Gasket Length	Adj. Device Height
4	100	25/75	40/130	9.6	8.1	2.75
5	125	40/130	60/165	9.6	9.1	2.75
6	150	60/206	100/265	9.6	10.1	2.75
7	180		118/350	12.4	10.9	2.75
8	200	95/295	147/530	12.4	11.9	2.75
10	250	140/470	295/940	12.4	12.9	2.75
12	300		470/1650	13.6	12.1	4.33
14	350		530/1880	16.3	14.8	4.33
16	400		589/2354	16.3	14.8	4.33



CVDR Constant Volume Dampers - Rectangular

Rectangle Constant Volume Dampers						Static Pressure 0.2 to 4.0 InWC				
Nominal	6	8	10	12	14	16	18	20	24	
mm	150	200	250	300	350	400	450	500	600	
4	100	120/350		175/590		235/880		310/1050		
6	150	60/165	175/590		265/950					
8	200		235/880	310/1050	365/1200	440/1475	500/1650	440/1475	700/2120	
10	250			385/1300	475/1650	560/1750	700/2150		880/2650	
12	300				560/1950	735/2350	825/2500		1030/3240	1150/3825
16	400					1125/3400			1300/4120	1530/4400
20	500								1650/4700	2050/5300
24	600	These sizes are available with 2 setting configuration								2350/5900



Flex Shaft Dampers

- Worm Gear (Round or Rectangular) or radial "bow-tie" style dampers
- Flexible steel shaft can be up to 10 feet long
- Much easier than square solid rod
- Ceiling obstacles are easy to avoid
- Dampers and controls are factory assembled to simplify installation and save time on the job site.

5020-1200-FS



RAD

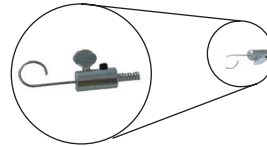
Plenum Dampers

The 800 Series cable controlled plenum dampers are ideal when the damper is installed close to the air outlet.



800AW

The inner wire is adjusted by hand and locked down with a simple thumb screw.



800AWR



800 Series dampers come fully factory assembled. They are typically used in slot diffusers or in the duct behind a grille.



800AWO

The Definition of Simple Airflow Control!

Demand-Air® CO₂



Demand Air CO₂ includes a motorized damper, sensor/controller and transformer in one convenient kit.

Demand-Air senses CO₂ and efficiently and proportionally modulates an outside air damper to ventilate based on CO₂ levels.

ASHRAE Standard 62.1 is the standard for ventilation system design and acceptable IAQ. ASHRAE points out that CO₂ concentration can be used as a guide for ventilation rates to improve IAQ.

Demand-Air® CO₂

Space Conditions	CO ₂ Concentration (ppm)	Damper Position
Stuffy close feeling, occupants may have trouble concentrating (higher concentrations)	1500	Damper Full Open 1200 ppm*
	1400	
	1300	
	1200	
	1100	
Normal Indoor Air 500-1000 ppm	1000	Damper Starts to Open 800 ppm*
	900	
	800	
	700	
Fresh Outdoor Air 300-500 ppm	600	Damper at minimum Position
	500	
	400	
	300	
	200	

CO₂ Concentration (ppm)

* Set-point can be factory adjusted

Electronic Balancing Dampers



Motorized balancing dampers that require no building power. The 9V positioner provides power and control.

Dampers can be installed up to 1000' from the balancing port. Make all airflow adjustments from the quiet and safety of the mechanical room.

The positioner has LCD meter to indicate damper position, a Young Regulator Exclusive.

Also available in a 27v model for control of virtually any size dampers.

Save time and labor. Factory provided cables simply snap into the motor and to the ports.