



Young Regulator Co.

7100 Krick Rd • Walton Hills, OH 44146

P: 440-232-9700 • F: 440-232-8266

www.youngregulator.com

Submit 912 – 10-10

Model 912 and 914

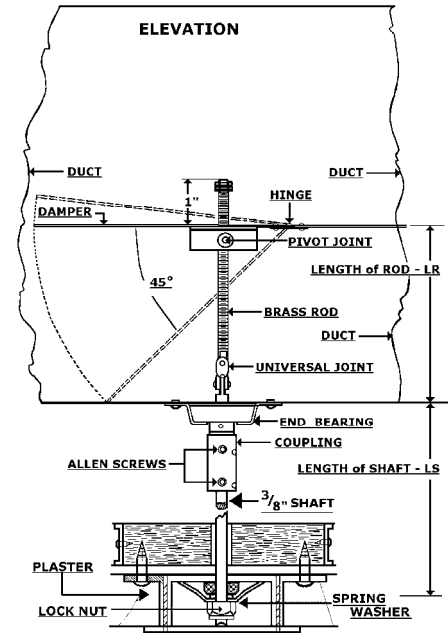
Concealed Air Split Regulators

912 Concealed Air Split Regulators

912 concealed air split regulators, designed for ceiling operation of splitter dampers with vertical shafts, include a bearing coupling, shaft, and a Young 301 concealed regulator. Any Young 3/8" regulator can be furnished with the 912. The 912 is operated by an 04 wrench, available separately, which is used to tighten and loosen the locknut on the 301 concealed regulator. The 912 are available in the standard sizes of 1 foot increments. The 3/8" shaft comes in 6", 12", and 18" lengths. Please specify both rod and shaft lengths on all orders.

912B is similar to 912 but without the portion of 912 below the coupling.

912C is similar to 912 but without the portion of 912 below the coupling and without threaded brass rod. Our 663 3/8-16 threaded brass rod is available in 6 ft. pieces which can be cut to the desired length in the field.

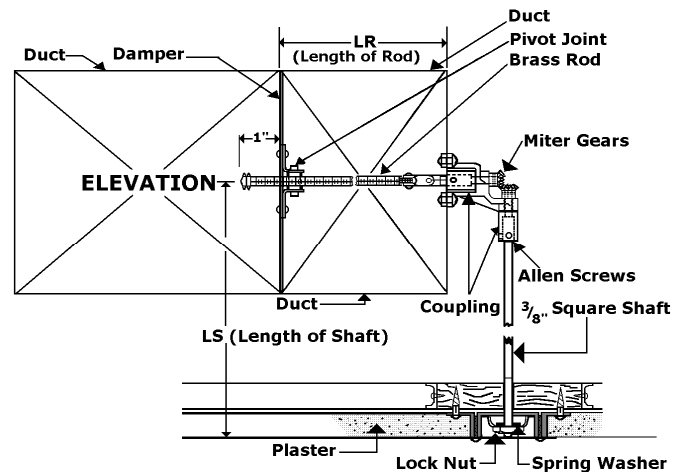


912 Installation

914 Concealed Air Split Regulators

914 3/8" concealed air split regulators include a 927C miter gears and are used when the operating shaft must be carried down at a right angle to the damper shaft. The 914 is normally furnished with a Young 301 concealed regulator for mounting on suspended and other types of ceilings to conceal and yet give access to the splitter damper.

Any Young 3/8" regulator may be substituted for the 301. Four 1/4 -20 mounting bolts and nuts are furnished with the miter gears. The damper blade is supplied by others. The 914 is operated by an 04 wrench, available separately, which is used to tighten and loosen the locknut on the 301 concealed regulator. The 914 is available in the following standard sizes of 1" increments. The 3/8" shaft comes in 6", 12", and 18" lengths. Please specify both rod and shaft lengths on all orders.



914 Installation

Notes

Note: 1 The pivot joint of all 912 and 914 series air split regulators should be attached to the damper blade as near to the hinge as possible (shown on the 912 installation drawing). The angle of the offset or universal joint should not be greater than 90°. Damper blade and hinge by others.

Note: 2 To control a Damper with the miter gear (#927C) and #301 ceiling regulator, see page #860.c in the Young Regulator Catalog.

Note: 3 Contact the factory for individual parts and assemblies. Also, intermediate sizes.