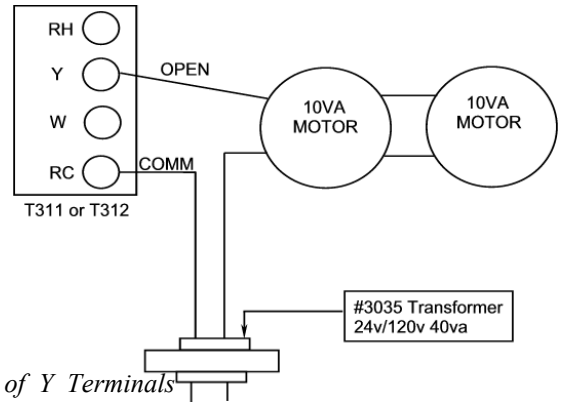


YOUNG REGULATOR COMPANY

THERMOSTAT WIRING DIAGRAMS

#1

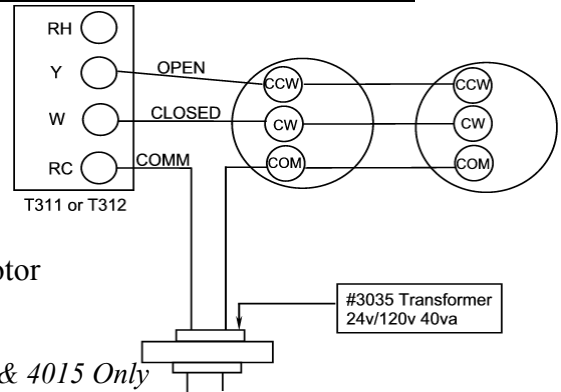
Mode: Cool Only
 Stat: T311 or T312
 Motor: Power Open
 Model: 4010 P.O.
 3150 P.O.



NOTE: For (PC) Power Close/Spring Open Models, Use W Instead of Y Terminals

#2

Mode: Cool Only
 Stat: T311 or T312
 Motor: Power Open
 Power Close
 Model: 3045, 3085, 4010-16, 9100E & 4075 2VA Motor
 3165 & 4015 6VA Motor

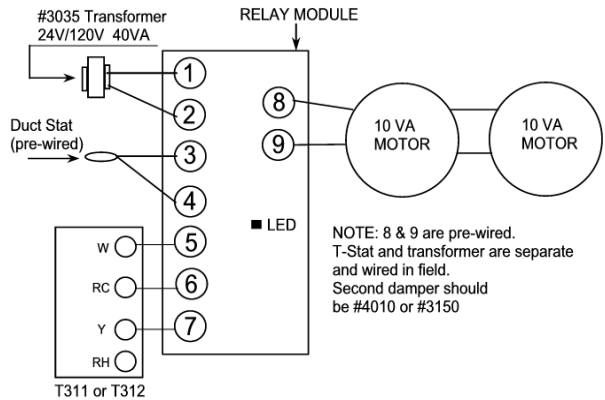


NOTE: Green Open – Yellow Close – White Common on 3165 & 4015 Only

2 Position (Auto Changeover)

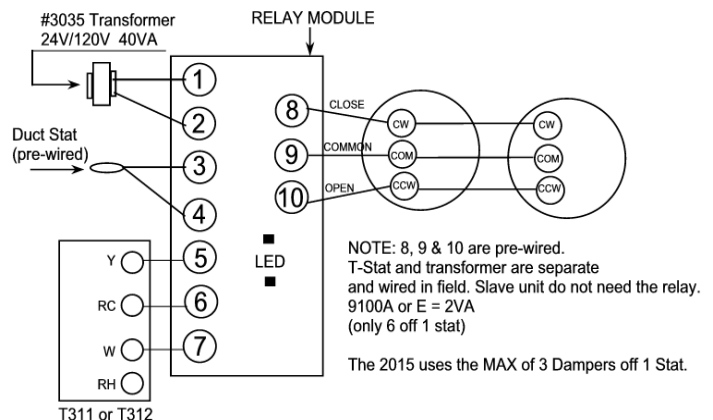
#3

Mode: Auto Changeover (H & C)
 Stat: T311 or T312
 Motor: Power Open/Spring Close
 Model: 2010 P.O. & 2050 P.O.
 NOTE: Spring Open Model Not Available



#4

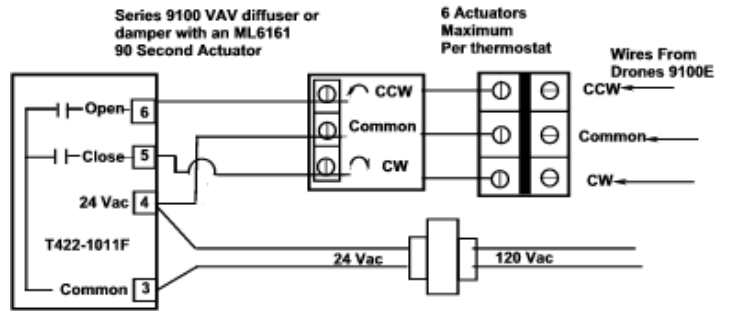
Mode: Auto- Changeover (H&C)
 Stat: T311 or T312
 Motor: Modulating VAV
 Model: 2015,2045, 2075,
 2085 and 9100A



Wiring Diagram for VAV Modulating Dampers Pressure Dependent

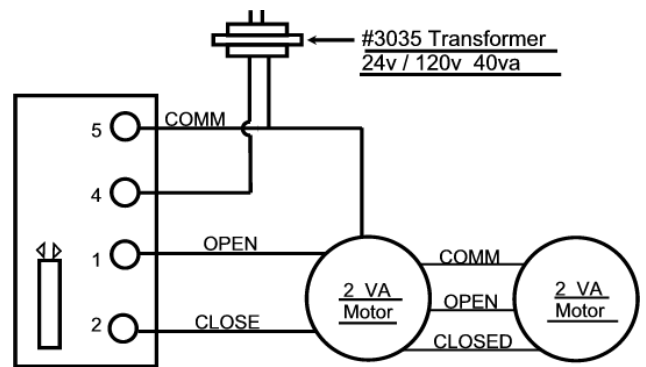
#5

Mode: Cool Only
 Stat: T422 (Digital)
 Motor: Modulating Open/
 Close with P+I Algorithm
 Model: 4075, 3085, 3045,
 9100E



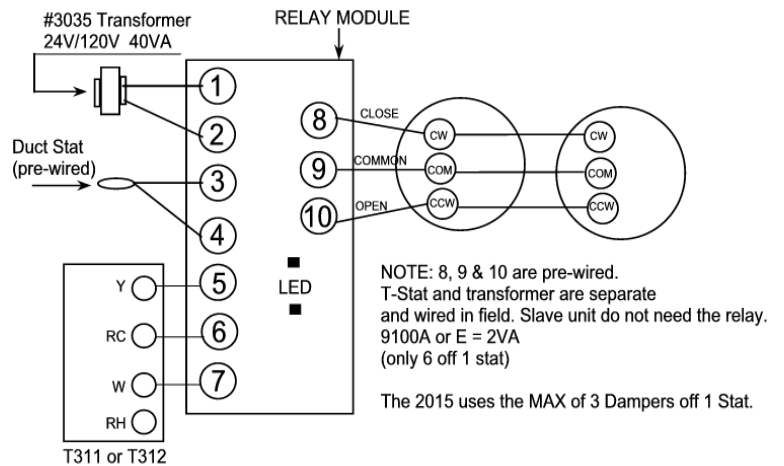
#6

Mode: Cool Only
 Stat: T322 (Digital with Display)
 Motor: Modulating Open/
 Close with P+I Algorithm
 Model: 4075, 3085, 3045,
 9100E



#7

Mode: Auto- Changeover (H&C)
 Stat: T311, T312 & T641
 Motor: Modulating VAV
 Model: 2015, 2045, 2075,
 2085 and 9100A

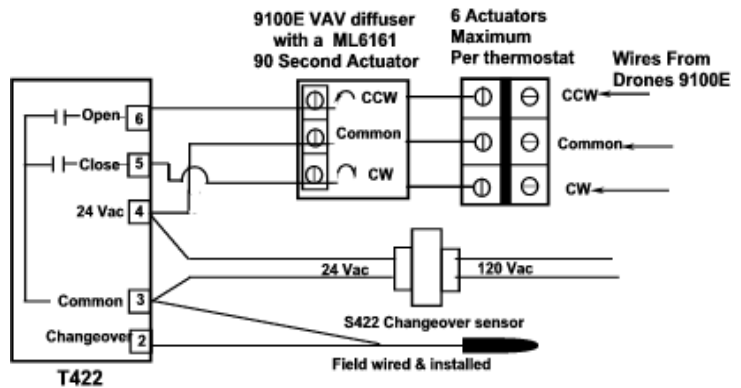


YOUNG REGULATOR COMPANY

Wiring Diagram for Modulating Dampers with Auto-Changeover Pressure Dependent

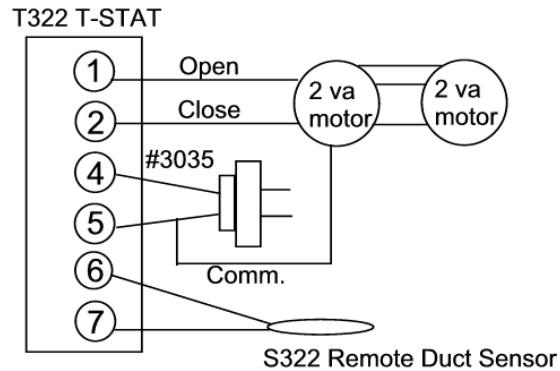
#8

Mode: Auto Changeover with P+I Control Algorithm
 Stat: T422 (Digital)
 Include S422 Duct Stat
 Motor: Modulating VAV
 Model: 4075, 3085, 3045, 9100E



#9

Mode: Auto Changeover with P+I Control Algorithm
 Stat: T322 (Digital with Display)
 Include S322 Duct Stat
 Motor: Modulating VAV
 Model: 4075, 3085, 3045, 9100E



WIRING NOTES

NOTE:(#1) For auto changeover the slave damper should be the standard 3 or 2 wire damper without the duct stat and changeover board.

Example: 2075 (Master) - 4075 (Slave)

NOTE:(#2) For Model 9100 - VA = 2.0. Only 6 motor off one stat.

NOTE:(#3) On 4 wire motors (example: 3165) the 2 common colored leads are grounds and act as one lead by connecting them together.