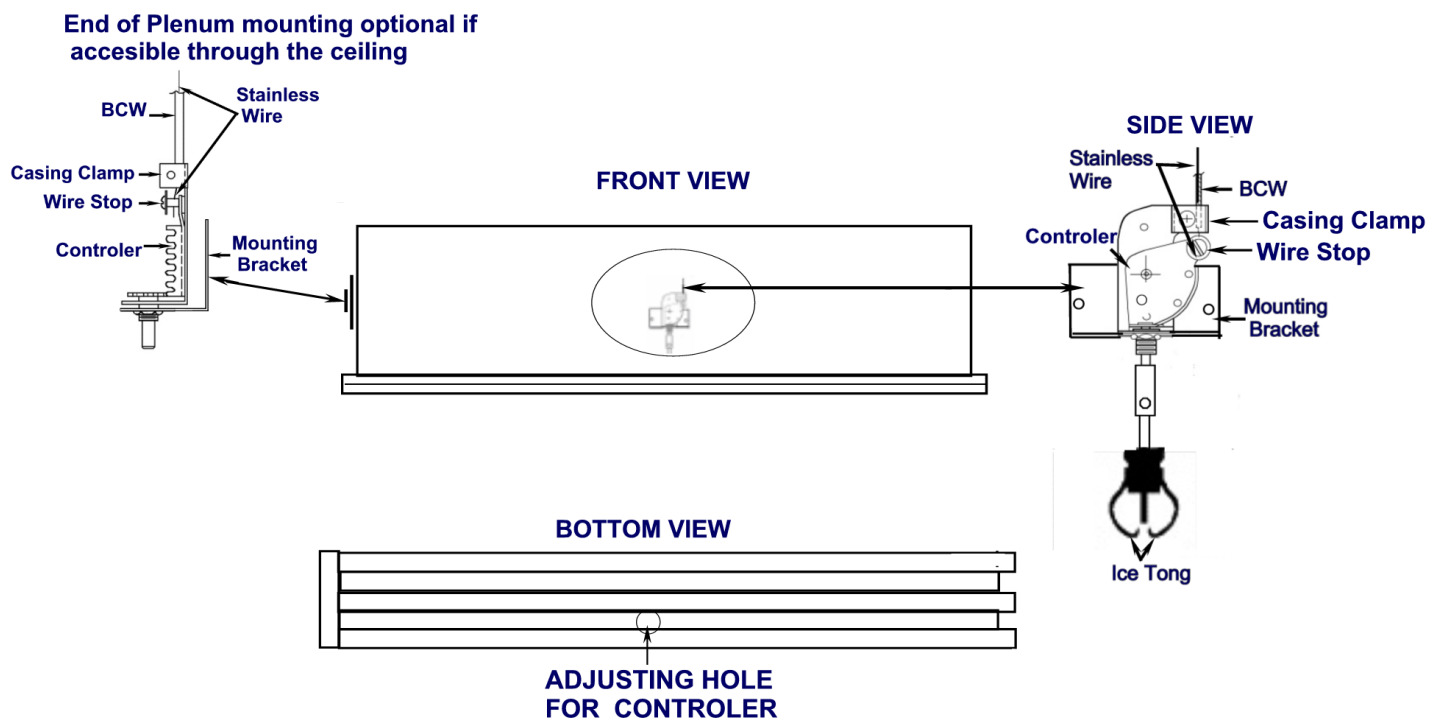


BOWDEN CABLE CONTROL 270-275ML-W-EXT.

Internal Mounted Diffuser Installation



1. Install controller to adjustable mounting bracket with mounting bracket nut.
2. With control wrench, turn control shaft counter-clockwise all the way (controller is now fully closed).
3. Attach 1/4" coupling to control shaft of #270 rack and pinion operator, then attach the shaft extension to other end of the coupling.
4. Drill a 1/4" hole in spine of directional baffle of the "ice tong" style diffuser that is opposite the supply air inlet of the plenum. With the extended shaft through this 1/4" hole, you can determine the location of the rack and pinion controller inside the plenum and fasten the bracket to the inside wall of the plenum. It is possible other places inside or outside the plenum will better serve the purpose.
5. Drill a hole in the plenum above the controller assembly for the casing and wire to run between controller and damper. Place one end of a length of BCW (long enough to run from damper to controller) through this hole to fasten to the controller. Attach BCW to controller by securing the casing with the casing clamp and the inside wire into the wire stop.
6. Refer to damper instructions to complete the assembly.